



# CEREAL SEPARATOR

TO 7/25

Cereal Separator type TO 7/25 produced by TAURUS, s.r.o., Chrudim, is a machine designed for separation of grains from impurities and contaminants to three fractions. Separation to fractions is carried out by means of flat screens.

The Machine is designed for integration into technological units for post-harvest grain treatment and similar industrial operations consisting of storage equipment and connected technological equipment for processing of dry bulk materials.



Item		Unit	Version
			TO 7/25
Basic dimensions	length	mm	1 833
	width		1 537
	height		1 350
	cubicle tilt regulation	degrees °	7 – 11°
Weight	Total	kg	approx. 15
	Flat screen 1 pc		510
Rated supply voltage		V	230/400
Rated frequency		Hz	50
Installed power		kW	2 x 0.25
Capacity *		m³/h	
- sorting			5 – 9.3
- pre-cleaning			25 - 33

\* Transport capacity depends on used screen perforation, and cubicle and vibrator tilt setting.  
Basic tilt is approx. 9°.

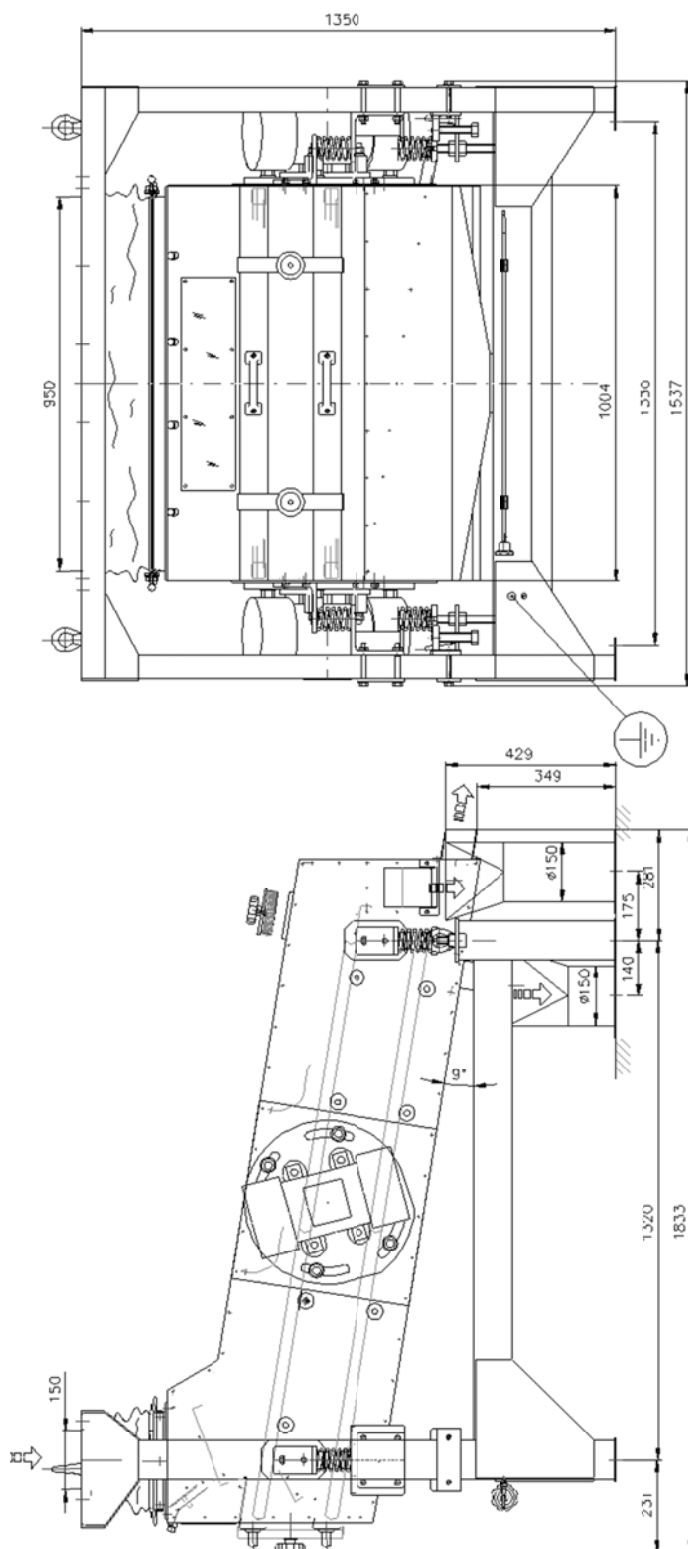
## Other Technical Data:

Dynamic effect

Frequency



## Basic Dimensions of the Machine



The separator can be supplemented by downstream final sorting by air by means of Aspiration Cubicle SA 7/25 with capture of ferromagnetic impurities.