



# DRUM SEPARATOR

BT 630-100, BT 630-1500

Drum Separator type BT 630 produced by TAURUS, s.r.o., Chrudim, is a machine designed for separation of dry loose grains to two fractions. Separation to two fractions is carried out by means of rotary cylindrical (drum) screen.

The Machine is designed for integration into technological units for preparation of compound feedingstuffs for animals (birds) and similar industrial operations consisting of material storage equipment and connected technological equipment for processing of dry bulk materials.



Item		Unit	Version		
			BT 630 - 1000	BT 630 - 1500	BT 630 – 1500 (2 sifting outputs)
Basic dimensions	length	mm	1575	2075	2075
	width		965	965	965
	height		1400	1650	1400
Weight	rotary screen	kg	28	37.5	37.5
	total		165	219	212
Installed power		kW	0.37		
Rated screen speed		rpm	10		
Transport capacity *		m <sup>3</sup> /h	4-20		

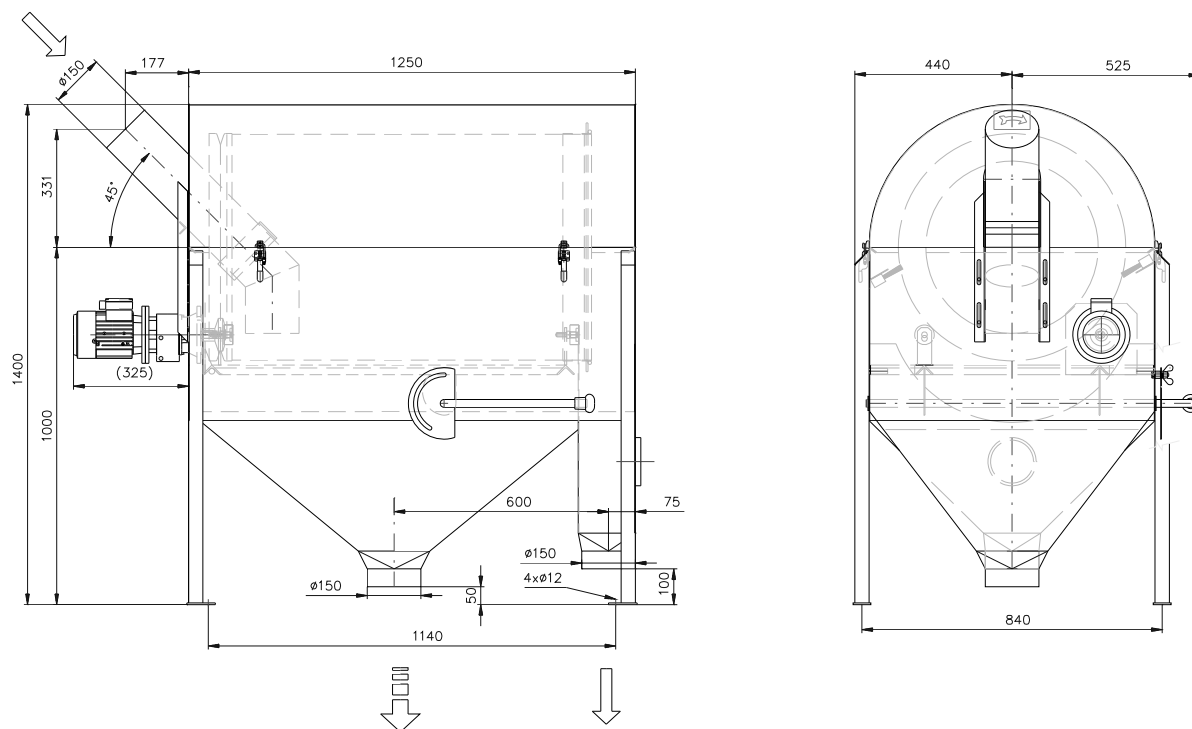
\* Transport capacity depends on used screen perforation and screen tilt setting. Maximum screen tilt is approx. 5°.

## Other Technical Data:

The drum separator is produced with screen lengths 1000 and 1500 mm. The longer version of separator allows choosing arrangement of sifting outlets either with one neck or with two necks.



## Basic Dimensions of the Machine



## (2 sifting outputs)

