



# STEAMING MIXER

MN 02 (version: 13, 09)

Steaming Mixer MN 02 produced by TAURUS, s.r.o., Chrudim, is a machine designed for moistening/steaming loose or rough-ground mixtures with simultaneous mixing, before granulation.

It is recommended to consult with the machine supplier, whether the machine is suitable for use with particular technological equipment and in particular premises and conditions.



Item		Unit	MN 02
Basic dimensions	length	mm	according to version
	width		Ø 204
	height		according to version
Weight		kg	100
Rated supply voltage		V	230/400
Rated frequency		Hz	50
Installed power		kW	1.5
Rated rotor speed		rpm	340
Capacity		kg/h	2-3

### Capacity conditions:

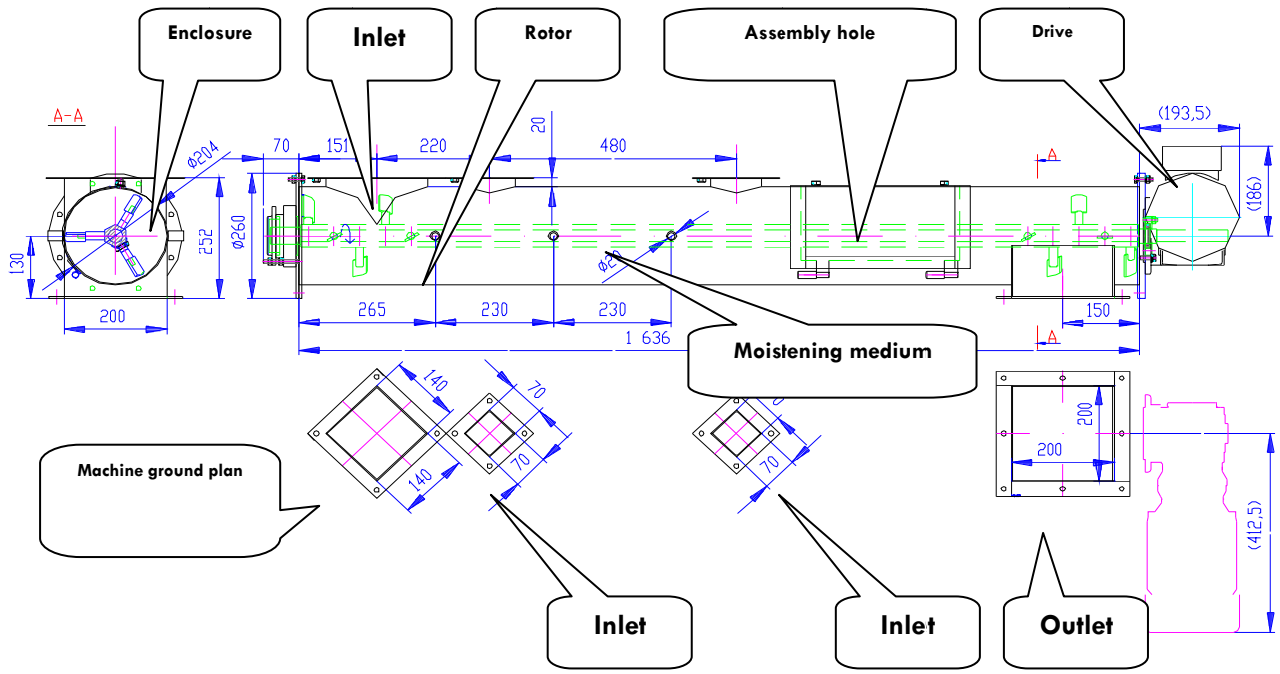
Capacity m <sup>3</sup> /h	Max. load A	Steam consumption kg/h for 1000 kg output	Water consumption kg/h for 1000 kg output
2 - 3	4	acc. to technology needs	acc. to technology needs

The maximum capacity value is limited by the capacity of granulating press and by the throughput of transport routes.



# Basic Dimensions of the Machine

MN 02 - 13



MN 02 - 09

