

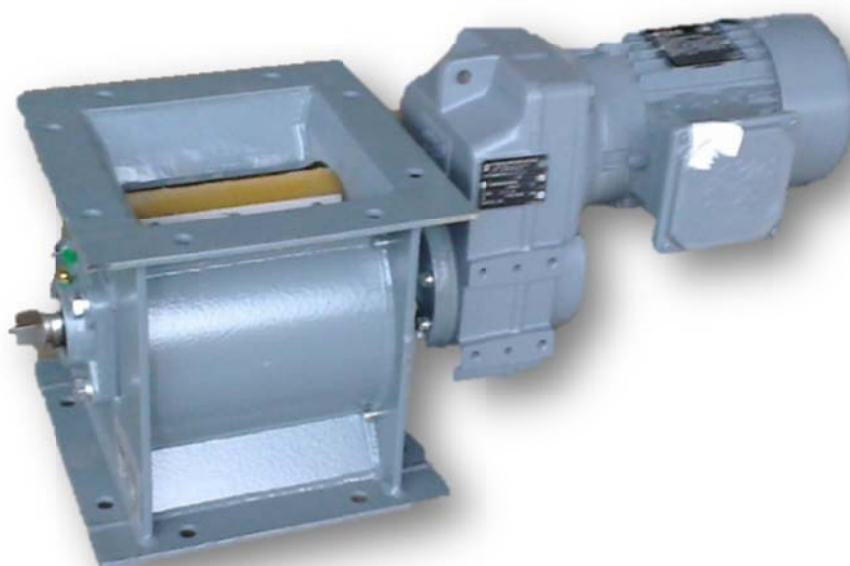


# FEEDING DEVICE

PD 260

Feeding Device produced by TAURUS, s.r.o., Chrudim, is a machine designed for gradual feeding of loose materials (products) from containers and silos in feed mills and at grain silos and similarly deposited loose materials (products) by constant speed (chosen according to the customer's requirements).

The inlet is positioned over the feeder rotor. The material is gradually transferred to the bottom outlet by feeder rotor rotation. An electric worm-gear serves as a drive unit.



Item		Unit	Version
			PD 260
Basic dimensions	width	mm	720
	height		562
	length		420
Rated rpm		rpm	15
Capacity		m <sup>3</sup> /h	8
Rated supply voltage		V	230/400
Installed power		kW	0.55
Total weight		kg	70



## Basic Dimensions of the Machine

