



BREAD SHREDDER

TCH 300

Stale Bread Shredder produced by TAURUS, s.r.o., Chrudim, is a machine designed for shredding stale bread discarded from the food sale network to the requisite granulation to allow further processing in technological lines of alcohol distilleries and/or agricultural holdings.

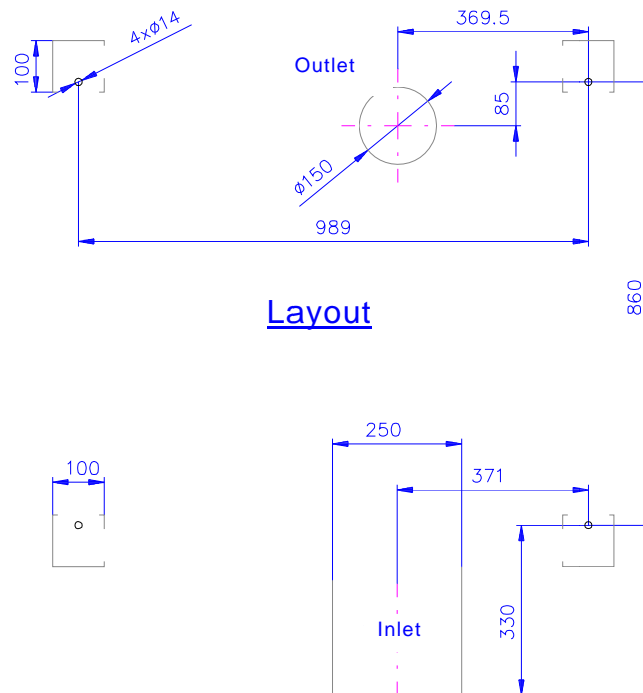
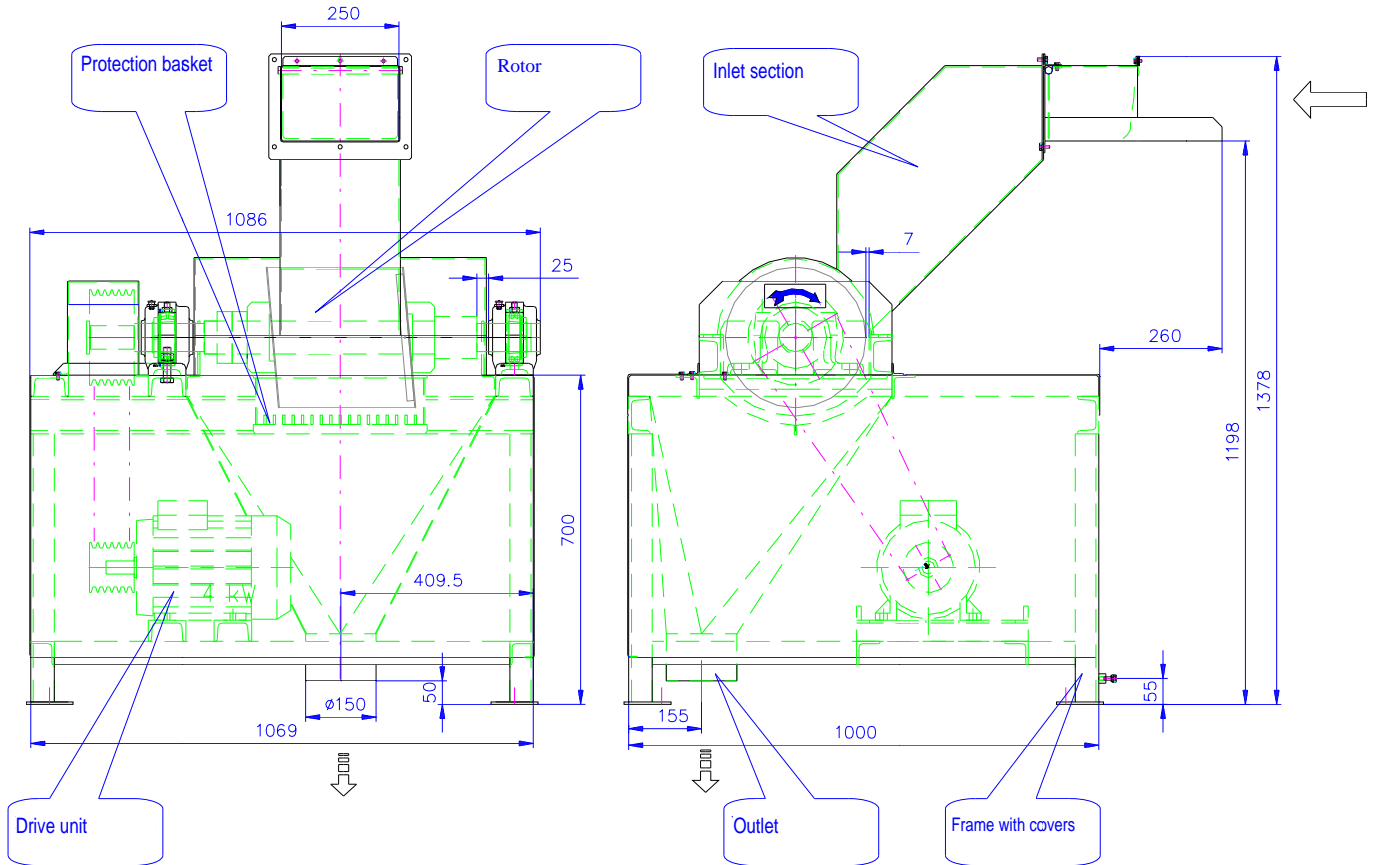
It is recommended to consult with the machine supplier, whether the machine is suitable for use with particular technological equipment and in particular premises and conditions.



Item		Unit	Version
			TCH 300
Basic dimensions	length	mm	1 260
	width		1 086
	height		1 380
	inlet height		1 200
Weight		kg	400
Rated supply voltage		V	230/400
Rated frequency		Hz	50
Installed power		kW	4
Rated rotor speed		rpm	720
Capacity		kg/h	300
The lowest degree of electrical equipment protection		-	IP 54



Basic Dimensions of the Machine



Layout